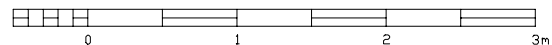

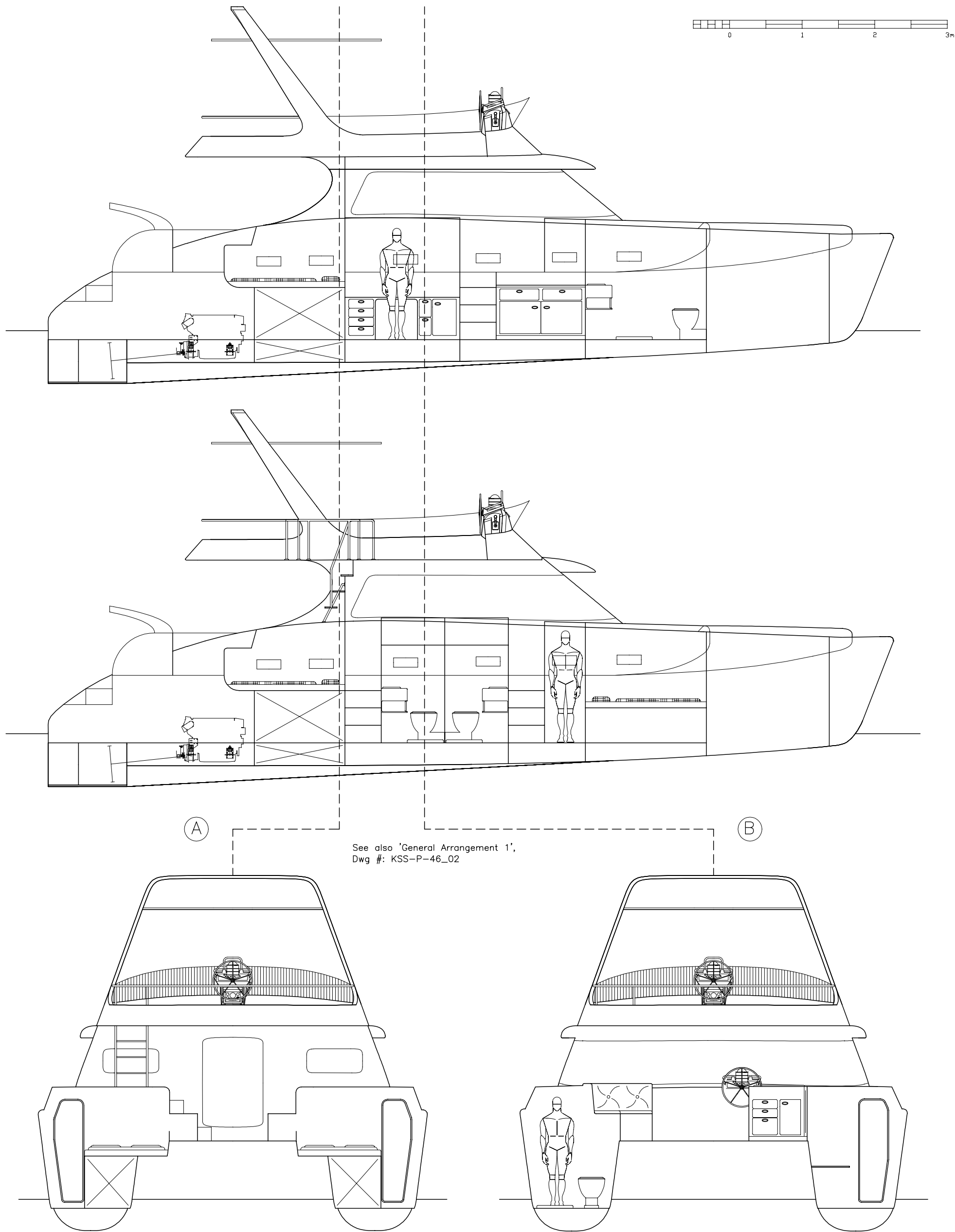


This rendering shows the vessel viewed from underneath. It shows the underwater hull shape for clarity when looking at the hull lines.



 KELSALL CATAMARANS INTERNATIONAL R.D.2, Waihi, New Zealand Tel: +64 (0) 7863 3332 Fax: 7915 Email: derek@kelsall.com Web: www.kelsall.com			
CLIENT:	Stock Design		
TITLE:	Study / Outboard Profiles & Rendering		
DESIGN:	KSS-P-46	Dgn #:	237
Dwg #:	KSS-P-46-01	SCALE:	60:1(A3), 30:1(A1)
DATE:	18-12-2000	C'ment:	Dimensions are mm. See separate scantling drawing.

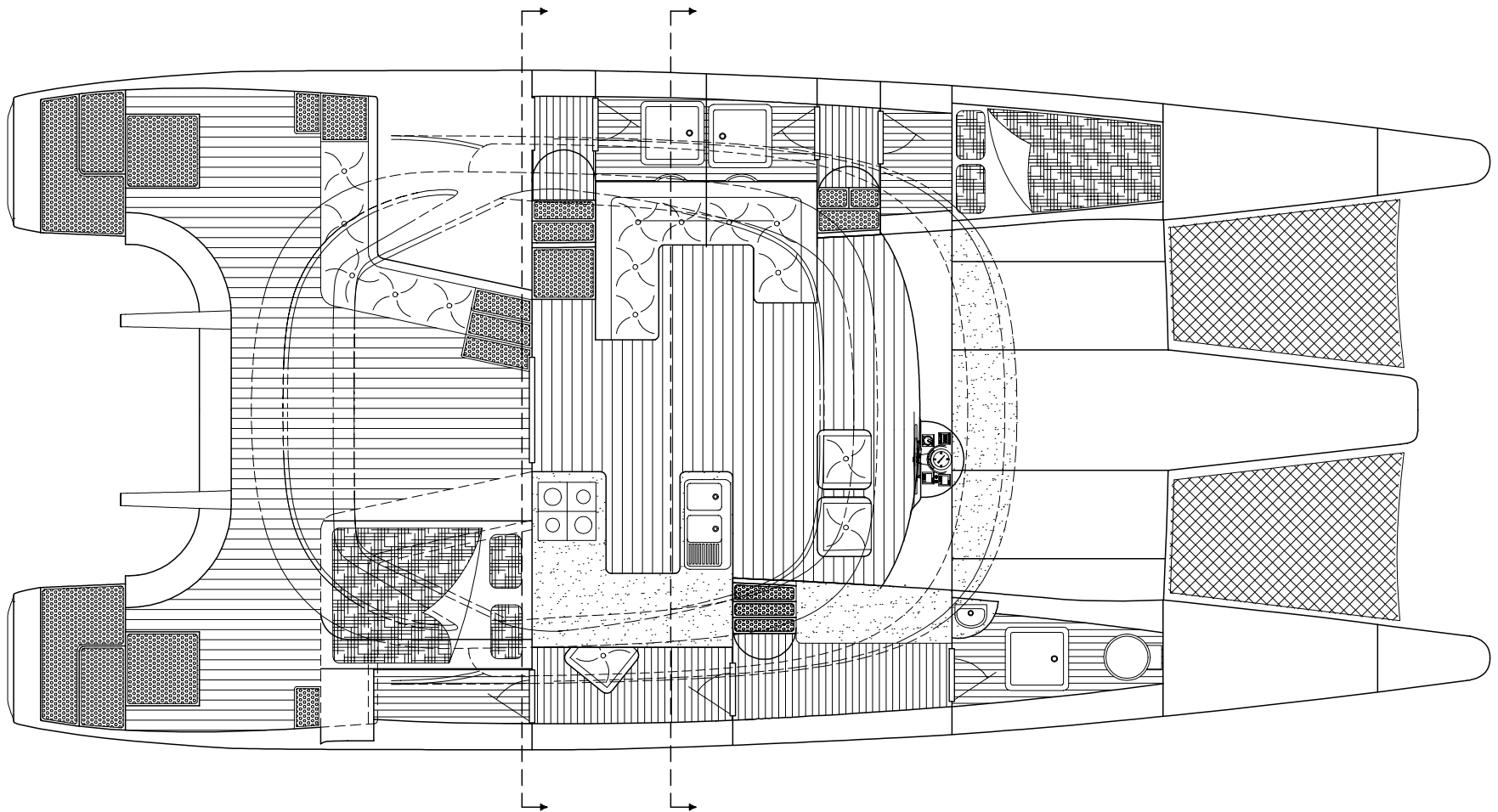
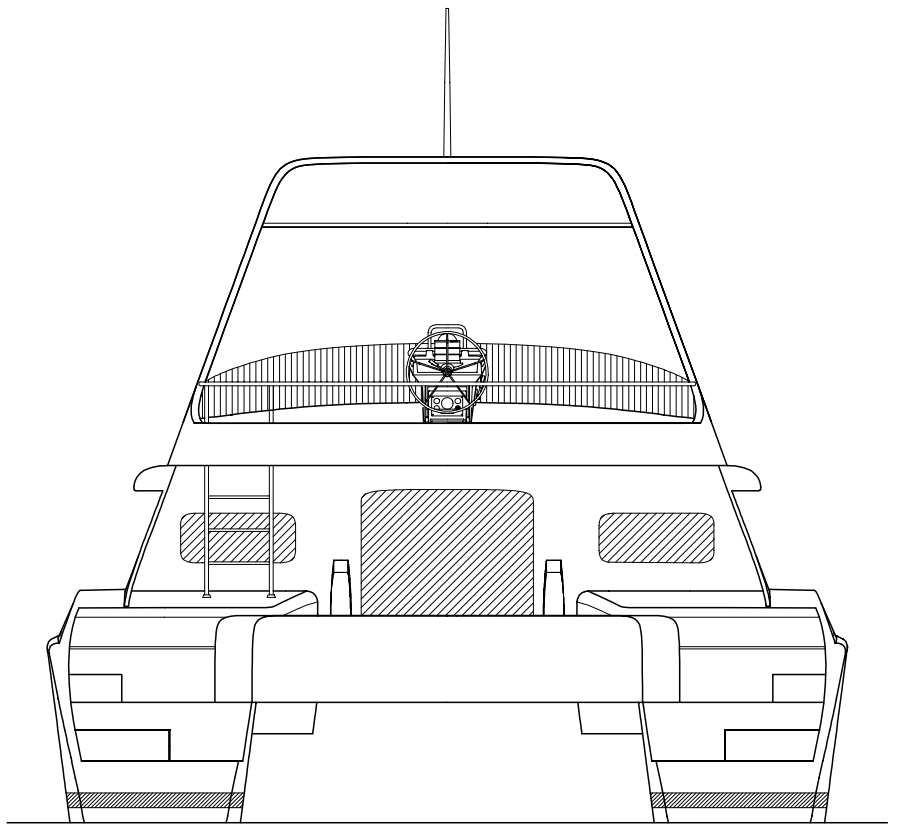
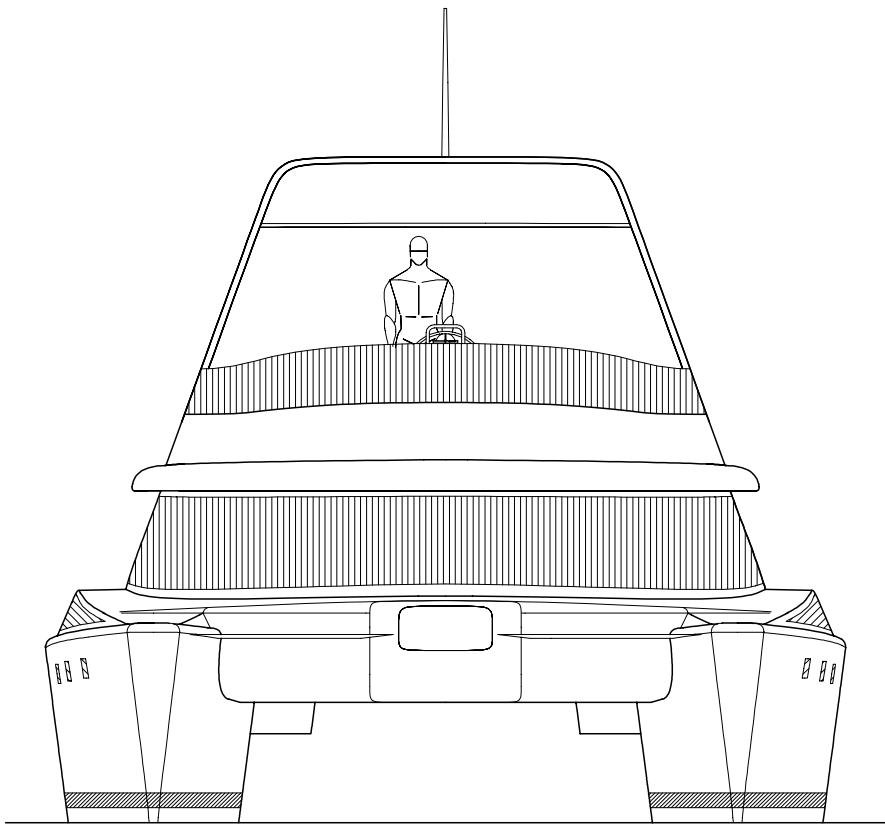


The aft cockpit is full width with direct access from the transom steps. The main berths are in twin aft cabins. Large capacity fuel tanks are arranged under these berths, giving a maximum range of 2000 nautical miles. This can be increased with extra tankage. The forward cabins are within the hulls. Saloon with galley and inside steering are on the bridge-deck. The large flybridge is designed to be made as a separate unit and fitted into place at a late stage of fit out. Access to the flybridge is by ladder from the aft cockpit. The flybridge is the full size of the deck head over the saloon and cockpit. The large size of the flybridge is a particular feature of this yacht although there is an option to build without. Access to the engine rooms is via deck hatch.



KELSALL CATAMARANS INTERNATIONAL
R.D.2,
Waihi,
New Zealand
Tel: +64 (0) 7863 3332
Fax: " 7915
Email: derek@kelsall.com
Web: www.kelsall.com

CLIENT:	Stock Design		
TITLE:	Study / General Arrangement 2		
DESIGN:	KSS-P-46	Dgn #:	237
Dwg #:	KSS-P-46-03	SCALE:	60:1(A3), 30:1(A1)
DATE:	18-12-2000	C'ment:	See general arrangement 1, dwg #: KSS-P-46-02

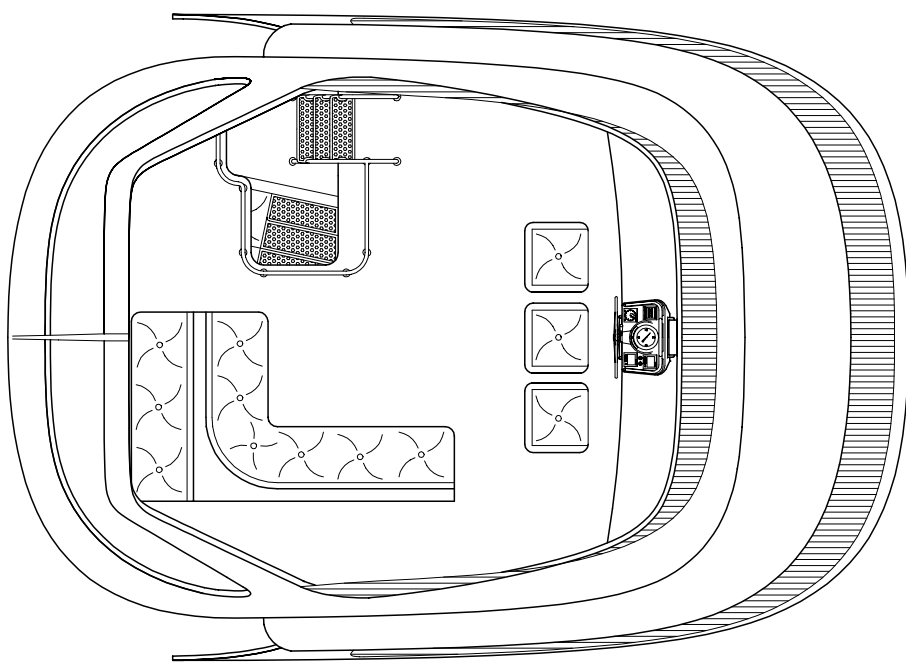


A

B

X-sections shown on 'General Arrangement 2',
Dwg #: KSS-P-46_03

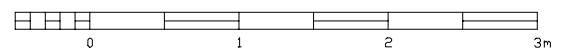
The standard arrangement, pictured here, has the entire starboard hull organised as an owner's suite. The head compartment is forward and a wokbench is situated inboard of the companionway. An office space leads into the aft cabin. The port hull is divided into two distinct cabins with dedicated access and heads for each.



Over 6 feet of head room is provided in all cabins and compartments. 6.5 feet is provided near midships within the hulls!

VESSEL PARAMETERS KSS-P-46

Loa	14.00m	45.93ft
Lwl	13.35m	43.80ft
Boa	6.44m	21.13ft
Bwl	1.37m	4.49ft
Draft	0.88m	2.89ft
Bdk Cl	0.97m	3.18ft
Displ	8.75t	8.75
Power	2x170kW	2x230Hp



KELSALL CATAMARANS INTERNATIONAL
R.D.2,
Waihi,
New Zealand
Tel: +64 (0) 7863 3332
Fax: 7915
Email: derek@kelsall.com
Web: www.kelsall.com

CLIENT:	Stock Design		
TITLE:	Study / General Arrangement 1		
DESIGN:	KSS-P-46	Dgn #:	237
Dwg #:	KSS-P-46-02	SCALE:	60:1(A3), 30:1(A1)
DATE:	18-12-2000	C'ment:	See general arrangement 2, dwg #: KSS-P-46-03